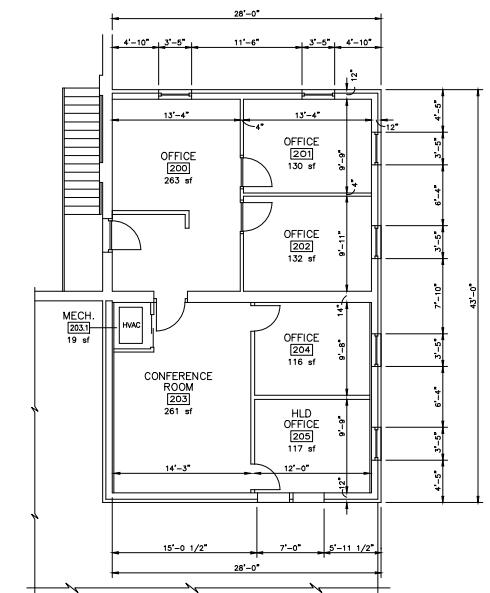


FIRST FLOOR PLAN



SECOND FLOOR PLAN

Rm#	Name	Area in sf
100	Assembly Hall	5487.22
100.1	Circulation	26.58
101	Maintenance Bay	5058.75
101a	Unit Storage	190.31
101b	Unit Storage	92.64
101c	Unit Storage	93.33
101d	Unit Storage	315.00
101e	Unit Storage	171.11
101f	Unit Storage	234.31
101g	Unit Storage	41.17
101h	Unit Storage	192.01
101i	Unit Storage	216.01
101j	Unit Storage	64.00
101k	Unit Storage	157.78
101l	Unit Storage	95.99
102	Office	151.25
103	Office	151.25
104	Office	152.50
105	Vestibule	125.00
106	Office	272.35
106.1	Mechanical Room	37.85
107	Corridor	316.77
108	Office	113.75
109	Office	124.44
110	Office	125.90
111	Office	221.81
112	Closet	37.06
113	Supply Room	400.00
114	Latrine-Men	252.83
115	Custodian	33.44
116	Latrine-Women	150.00
117	Kitchen	173.33
118	Kitchen	293.33
119	Office	146.67
120	Office	115.56
121	Classroom	667.85
121.1	Mechanical Room	13.80
122	Office	152.10
123	Office	136.79
124	Vault	260.00
125	Supply Room	850.06
126	Vault	260.00
127	Copy Room	121.33
128	I.T. Room	126.67
129	Office/Conference Room	250.17
130	Office	281.97
130.1	Mechanical Room	17.57
131	Office	108.06
132	Office	107.14
	Lower Level Total	19184.81
200	Office	262.74
201	Office	130.00
202	Office	132.22
203	Conference Room	261.10
203.1	Mechanical Room	18.53
204	Office	116.00
205	Office	117.00
206a	Overhead Deck-Unit Storage	241.67
206b	Overhead Deck-Unit Storage	459.32
206c	Overhead Deck-Unit Storage	171.11
206d	Overhead Deck-Unit Storage	234.31
206e	Overhead Deck-Unit Storage	168.00
	Upper Level Total	2312.00
	Net Area Total:	21496.81

FLOOR PLAN
WICHITA (EAST), KANSAS
 TOTAL "FOOTPRINT" AREA: 20792 SF

SCALE: 1" = 20'

NATIONAL GUARD ARMORY

WICHITA (EAST), KANSAS

DATE	Revision per site visit	Feb 2010	RES
DATE	Revision per site visit	Sept 2009	RES
SYMBOL	DESCRIPTION	DATE	APPROVAL

REVISIONS

ADJUTANT GENERAL'S DEPARTMENT
 KANSAS ARMY NATIONAL GUARD
 DIRECTORATE OF FACILITIES ENGINEERING
 2722 SW Topinka Blvd., TOPEKA, KANSAS 66611-1159
 PHONE: 785-274-1140 FAX: 785-274-1619

FLOOR PLAN FOR WICHITA, KANSAS NATIONAL GUARD ARMORY EAST ARMORY - 620 No. EDGEWOOD ST

DESIGNED BY: R. E. Smith
 DRAWN BY: R. E. Smith
 CHECKED BY: []
 APPROVED BY: []
 DATE: Oct 20 2003

ISSUED BY: []
 DIRECTOR OF FACILITIES ENGINEERING

SHEET 1 OF 1