

FOR LEASE

Northrock Retail Center



The Northrock Retail Center is located in the high income, high growth area of North Rock Road in the northeast portion of Wichita, Kansas. The property is accessible from the controlled intersection of 32nd Street and Rock Road. Located south of the K-96 expressway, Northrock Center is easily accessible to all of Wichita.

Location: 3242 North Rock Rd. Wichita, KS

Space Available: Retail space from 2,194 sq. Ft.

Lease Rate: Negotiable plus NNN

Demographics: Est. Average Household Income
1 Mile = \$80,787 3 Miles = \$76,866 5 Miles = \$68,144

Signage: Pylon Signage is available

Area Neighbors: Chipotle, Office Depot, Wal-Mart Super Center, Sam's, Office Max, Starbucks, Stone Cold Creamery, Kohl's, McDonalds, and Petsmart.

For More Information Contact:

Bree Kelley

T: (316) 262-3331

F: (316) 262-6321

C: (316) 516-7417

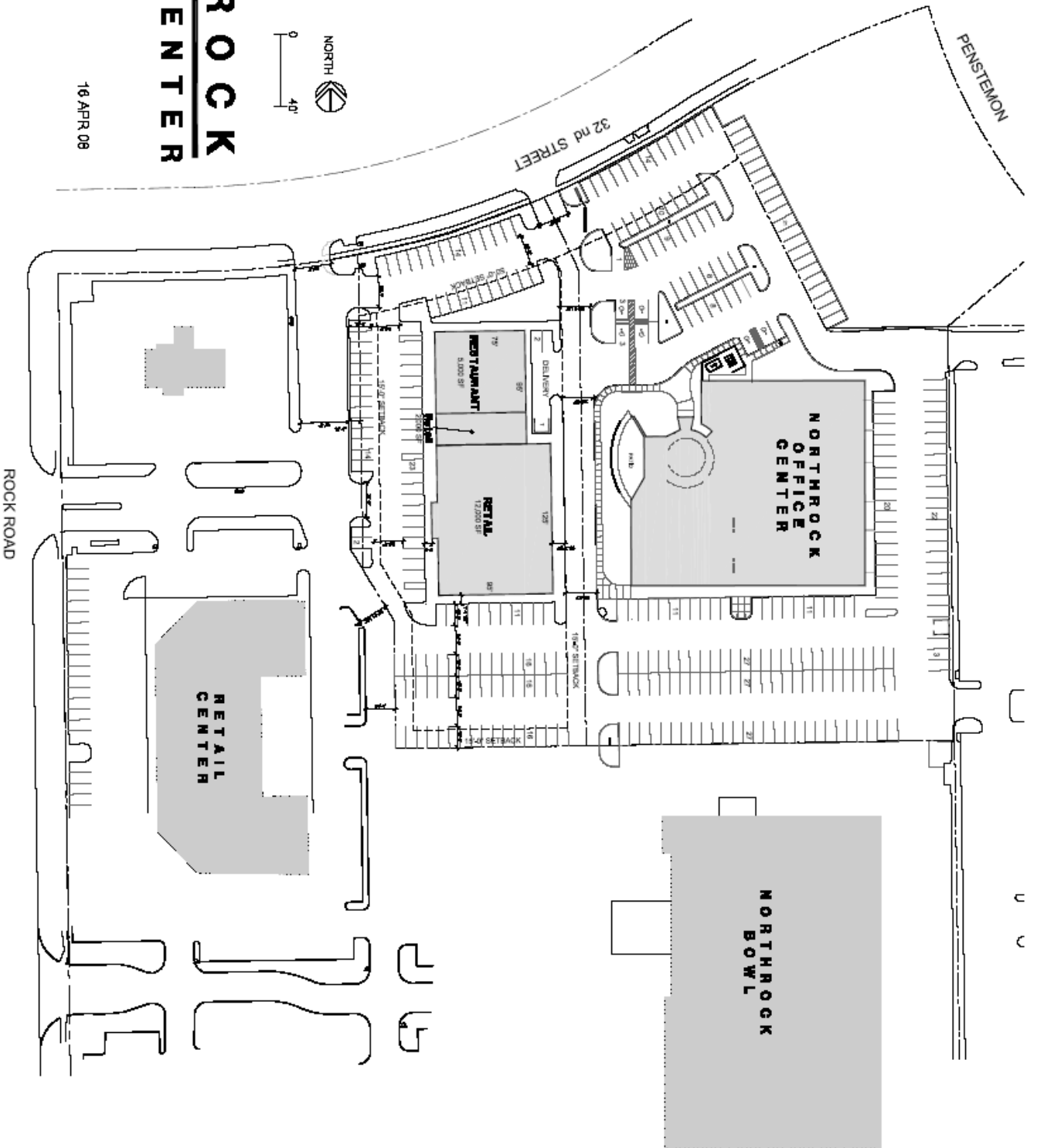
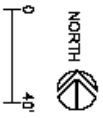
bree@occmgmt.com

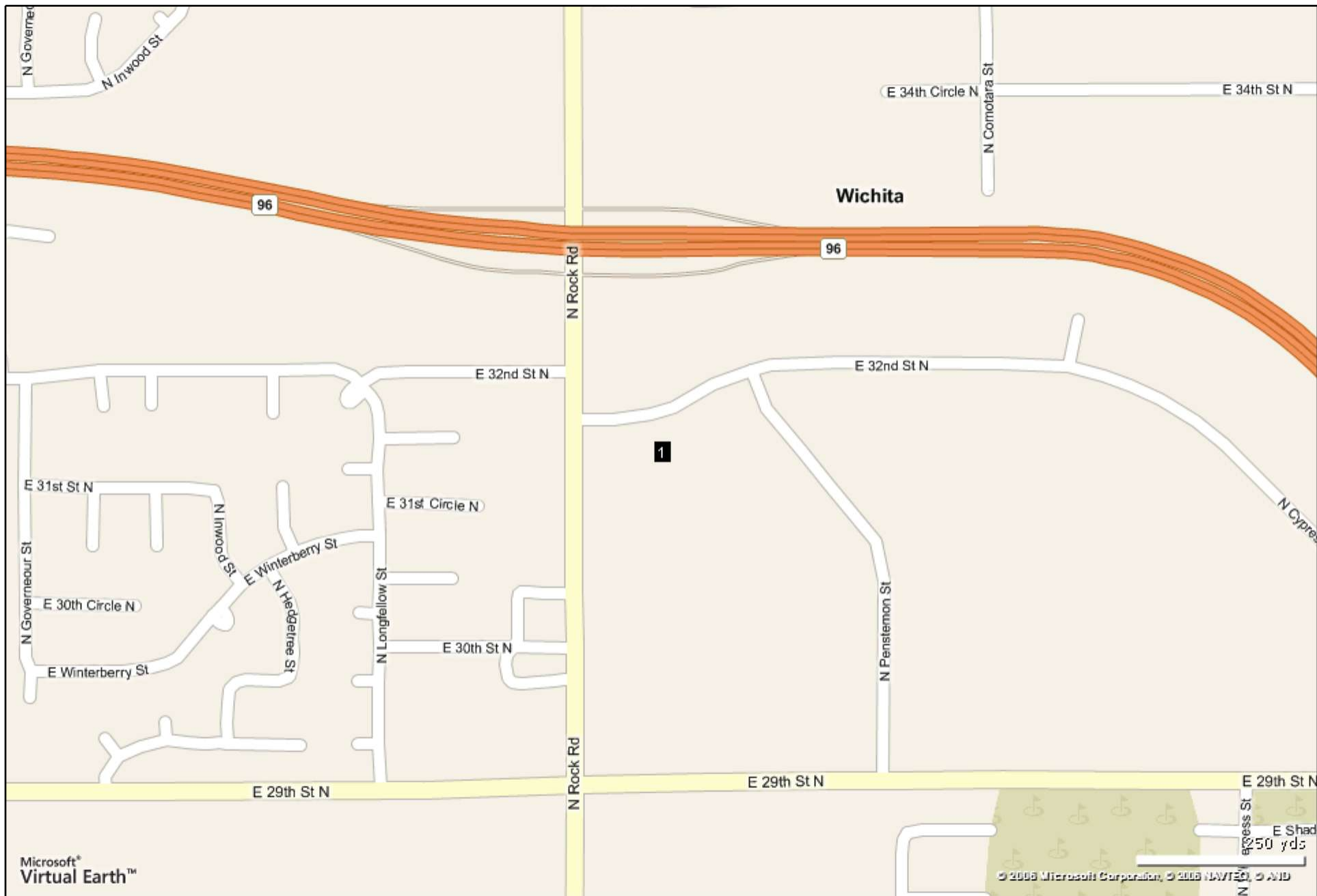
www.occmgmt.com



16 APR 08

NORTHROCK RETAIL CENTER





Microsoft®
Virtual Earth™

© 2006 Microsoft Corporation, © 2006 NAVTEQ, © AWD

Demographic Detail Report

3242 N Rock Rd, Wichita, KS 67226

Building Type: Retail
Secondary: General Freestanding
GLA: 19,000 SF
Year Built: 2009
Total Available: 1,782 SF
% Leased: 90.62%
Rent/SF/Yr: \$18.00



Radius	1 Mile		3 Mile		5 Mile	
Population						
2014 Projection	7,863		44,428		103,436	
2009 Estimate	7,490		41,876		99,237	
2000 Census	6,881		36,833		91,147	
Growth 2009 - 2014	5.00%		6.10%		4.20%	
Growth 2000 - 2009	8.90%		13.70%		8.90%	
2009 Population by Age	7,490		41,876		99,237	
Age 0 - 4	572	7.64%	3,040	7.26%	7,494	7.55%
Age 5 - 9	517	6.90%	2,910	6.95%	7,290	7.35%
Age 10 - 14	489	6.53%	2,941	7.02%	7,164	7.22%
Age 15 - 17	283	3.78%	1,714	4.09%	4,269	4.30%
Age 18 - 20	284	3.79%	1,734	4.14%	4,193	4.23%
Age 21 - 24	485	6.48%	2,449	5.85%	5,830	5.87%
Age 25 - 34	1,243	16.60%	6,081	14.52%	13,656	13.76%
Age 35 - 44	1,079	14.41%	5,648	13.49%	12,994	13.09%
Age 45 - 49	520	6.94%	3,089	7.38%	7,067	7.12%
Age 50 - 54	484	6.46%	2,865	6.84%	6,827	6.88%
Age 55 - 59	450	6.01%	2,615	6.24%	5,979	6.02%
Age 60 - 64	336	4.49%	1,950	4.66%	4,695	4.73%
Age 65 - 74	355	4.74%	2,244	5.36%	5,722	5.77%
Age 75 - 84	216	2.88%	1,645	3.93%	4,037	4.07%
Age 85 and over	176	2.35%	950	2.27%	2,023	2.04%
Age 16 and over	5,817	77.66%	32,413	77.40%	75,836	76.42%
Age 18 and over	5,629	75.15%	31,271	74.68%	73,021	73.58%
Age 21 and over	5,345	71.36%	29,537	70.53%	68,828	69.36%
Age 65 and over	747	9.97%	4,839	11.56%	11,782	11.87%
Median Age	33.90		35.10		34.80	
Average Age	35.60		36.60		36.30	

Demographic Detail Report

3242 N Rock Rd, Wichita, KS 67226

Radius	1 Mile	3 Mile	5 Mile
2009 Population By Race	7,490	41,876	99,237
White	5,464 72.95%	28,357 67.72%	61,439 61.91%
Black or African American	768 10.25%	7,581 18.10%	24,890 25.08%
American Indian and Alaska Native	37 0.49%	199 0.48%	625 0.63%
Asian	796 10.63%	3,738 8.93%	6,677 6.73%
Native Hawaiian and Pacific Islander	1 0.01%	21 0.05%	76 0.08%
Other Race	189 2.52%	765 1.83%	2,560 2.58%
Two or More Races	235 3.14%	1,214 2.90%	2,972 2.99%
2009 Population by Hispanic Origin	7,489	41,876	99,237
Not Hispanic or Latino	7,022 93.76%	39,767 94.96%	93,319 94.04%
Hispanic or Latino:	468 6.25%	2,109 5.04%	5,918 5.96%
Mexican	269 3.59%	1,272 3.04%	3,956 3.99%
Puerto Rican	46 0.61%	199 0.48%	426 0.43%
Cuban	17 0.23%	45 0.11%	109 0.11%
Other Hispanic or Latino	135 1.80%	593 1.42%	1,427 1.44%
2009 Age 5+ Language at Home	6,917	38,836	91,744
Speak Only English	5,906 85.38%	34,739 89.45%	83,000 90.47%
Speak Asian or Pacific Island	337 4.87%	1,375 3.54%	2,792 3.04%
Speak IndoEuropean	290 4.19%	1,109 2.86%	2,103 2.29%
Speak Spanish	308 4.45%	1,189 3.06%	3,104 3.38%
Speak Other Language	76 1.10%	424 1.09%	745 0.81%
2009 Median Age, Male	33.40	33.70	33.20
2009 Average Age, Male	34.70	35.20	35.00
Median Age, Female	34.40	36.50	36.30
Average Age, Female	36.50	37.90	37.60
2009 Population by Employment Status (Age 16+)	5,817	32,413	75,837
In Armed Forces	11 0.19%	53 0.16%	277 0.37%
Civilian, Employed	4,245 72.98%	21,797 67.25%	49,003 64.62%
Civilian, Unemployed	220 3.78%	1,336 4.12%	3,800 5.01%
Not In Labor Force	1,341 23.05%	9,227 28.47%	22,757 30.01%
2009 Population by Occupation Classification (Age 16+)	4,246	21,796	49,003
Blue Collar	469 11.05%	3,053 14.01%	8,435 17.21%
White Collar	3,340 78.66%	16,184 74.25%	33,803 68.98%
Service	437 10.29%	2,559 11.74%	6,765 13.81%

Demographic Detail Report

3242 N Rock Rd, Wichita, KS 67226

Radius	1 Mile	3 Mile	5 Mile
2000 Population by Marital Status (Age 15+)	5,912	32,985	77,289
Total, Never Married	1,825 30.87%	9,335 28.30%	22,723 29.40%
Married	3,274 55.38%	18,887 57.26%	41,008 53.06%
Widowed	269 4.55%	2,050 6.21%	5,058 6.54%
Divorced	544 9.20%	2,713 8.22%	8,500 11.00%
Males Divorced	217	842	2,713
Females Divorced	220	1,286	4,460
Males, Never Married	746	4,105	10,446
Females Never Married	771	3,521	9,021
2009 Population by Education	4,858	27,088	62,999
Less Than 9Th Grade	77 1.59%	395 1.46%	1,502 2.38%
Some High School, No Diploma	57 1.17%	927 3.42%	3,776 5.99%
High School Graduate (Includes Equivalency)	653 13.44%	4,558 16.83%	13,177 20.92%
Some College, No Degree	1,012 20.83%	6,020 22.22%	14,447 22.93%
Associate Degree	382 7.86%	1,743 6.43%	3,748 5.95%
Bachelor Degree	1,631 33.57%	8,350 30.83%	16,438 26.09%
Advanced Degrees	1,046 21.53%	5,095 18.81%	9,911 15.73%
2009 Population by Occupation (Age 16+)	4,683	24,358	55,770
Management, Business, & Financial	1,393 29.75%	7,106 29.17%	14,648 26.27%
Professional & Related Occupations	386 8.24%	1,728 7.09%	3,436 6.16%
Services	1,886 40.27%	10,136 41.61%	24,117 43.24%
Sales & Office	622 13.28%	2,846 11.68%	6,624 11.88%
Farming, Fishing, and Forestry	5 0.11%	42 0.17%	76 0.14%
Construction and Extraction, Maint	97 2.07%	633 2.60%	1,802 3.23%
Production & Transportation	294 6.28%	1,867 7.66%	5,067 9.09%
2009 Workers by Travel Time to Work (Age 16+)	4,257	21,850	49,280
Less Than 15 Minutes	1,582 37.16%	7,869 36.01%	18,464 37.47%
15 to 29 Minutes	2,214 52.01%	11,788 53.95%	25,581 51.91%
30 to 44 Minutes	237 5.57%	1,611 7.37%	3,683 7.47%
45 to 59 Minutes	66 1.55%	181 0.83%	507 1.03%
60+ Minutes	158 3.71%	401 1.84%	1,045 2.12%

Demographic Detail Report

3242 N Rock Rd, Wichita, KS 67226

Radius	1 Mile	3 Mile	5 Mile
Households			
2014 Projection	3,326	18,154	42,067
2009 Estimate	3,159	17,091	40,344
2000 Census	2,865	14,881	36,913
Growth 2009 - 2014	5.30%	6.20%	4.30%
Growth 2000 - 2009	10.30%	14.90%	9.30%
2000 Households by HH Size			
1-Person Households	864 30.16%	4,301 28.90%	11,226 30.41%
2-Person Households	997 34.80%	4,959 33.32%	11,988 32.48%
3-Person Households	418 14.59%	2,259 15.18%	5,598 15.17%
4-Person Households	392 13.68%	2,011 13.51%	4,580 12.41%
5-Person Households	132 4.61%	913 6.14%	2,264 6.13%
6-Person Households	50 1.75%	306 2.06%	804 2.18%
7 or more Person Households	12 0.42%	132 0.89%	452 1.22%
2009 Average Household Size			
	2.35	2.42	2.43
2009 Households by HH Income			
Income Less than \$15,000	147 4.65%	1,584 9.27%	4,872 12.08%
Income: \$15,000 - \$24,999	195 6.17%	1,274 7.45%	3,704 9.18%
Income: \$25,000 - \$34,999	262 8.29%	1,462 8.55%	4,231 10.49%
Income: \$35,000 - \$49,999	416 13.16%	1,846 10.80%	5,129 12.71%
Income: \$50,000 - \$74,999	680 21.52%	3,387 19.82%	7,700 19.09%
Income: \$75,000 - \$99,999	781 24.72%	3,596 21.04%	7,223 17.90%
Income: \$100,000 - \$149,999	401 12.69%	2,317 13.56%	4,323 10.72%
Income: \$150,000 - \$249,999	221 6.99%	1,271 7.44%	2,379 5.90%
Income: \$250,000 - \$499,999	49 1.55%	300 1.76%	665 1.65%
Income: \$500,000 or more	8 0.25%	54 0.32%	118 0.29%
2009 Avg Household Income			
	\$81,449	\$79,851	\$71,670
2009 Med Household Income			
	\$70,070	\$66,897	\$56,794
2009 Per Capita Income			
	\$34,770	\$32,540	\$29,315
2009 Occupied Housing			
Owner Occupied	1,669 52.83%	10,817 63.29%	25,136 62.31%
Renter Occupied	1,490 47.17%	6,274 36.71%	15,207 37.69%

Demographic Detail Report

3242 N Rock Rd, Wichita, KS 67226

Radius	1 Mile		3 Mile		5 Mile	
2009 Housing Value - Owner Occupied	1,668		10,817		25,135	
Value Less than \$20,000	0	0.00%	39	0.36%	664	2.64%
Value \$20,000 - \$39,999	4	0.24%	159	1.47%	1,723	6.85%
Value \$40,000 - \$59,999	22	1.32%	374	3.46%	2,153	8.57%
Value \$60,000 - \$79,999	48	2.88%	530	4.90%	2,324	9.25%
Value \$80,000 - \$99,999	206	12.35%	1,471	13.60%	3,204	12.75%
Value \$100,000 - \$149,999	562	33.69%	3,496	32.32%	5,909	23.51%
Value \$150,000 - \$199,999	383	22.96%	2,210	20.43%	4,139	16.47%
Value \$200,000 - \$299,999	341	20.44%	1,503	13.89%	2,802	11.15%
Value \$300,000 - \$399,999	51	3.06%	475	4.39%	1,076	4.28%
Value \$400,000 - \$499,999	27	1.62%	175	1.62%	364	1.45%
Value \$500,000 - \$749,999	23	1.38%	278	2.57%	533	2.12%
Value \$750,000 - \$999,999	1	0.06%	51	0.47%	128	0.51%
Value \$1,000,000 or more	0	0.00%	56	0.52%	116	0.46%
2009 Med Housing Val-Owner Occupied	\$149,089		\$138,857		\$118,188	
2000 Housing Units by Units in Structure	3,209		16,256		40,783	
1 Unit Attached	190	5.92%	761	4.68%	1,606	3.94%
1 Unit Detached	1,472	45.87%	9,687	59.59%	26,967	66.12%
2 Units	44	1.37%	243	1.49%	1,321	3.24%
3 - 19 Units	871	27.14%	2,936	18.06%	5,882	14.42%
20 - 49 Units	289	9.01%	1,098	6.75%	1,632	4.00%
50 or more Units	334	10.41%	1,457	8.96%	2,579	6.32%
Mobile Home or Trailer	9	0.28%	70	0.43%	786	1.93%
Boat, RV, Van, Etc.	0	0.00%	4	0.02%	10	0.02%
2009 Housing Units by Yr Built	3,626		19,104		45,936	
Built 1999 to Present	566	15.61%	3,797	19.88%	6,508	14.17%
Built 1995 to 1998	392	10.81%	1,548	8.10%	2,699	5.88%
Built 1990 to 1994	660	18.20%	2,256	11.81%	3,075	6.69%
Built 1980 to 1989	1,613	44.48%	4,547	23.80%	6,002	13.07%
Built 1970 to 1979	296	8.16%	3,220	16.86%	5,781	12.58%
Built 1960 to 1969	37	1.02%	1,666	8.72%	4,789	10.43%
Built 1950 to 1959	25	0.69%	1,507	7.89%	8,550	18.61%
Built 1940 to 1949	6	0.17%	308	1.61%	4,415	9.61%
Built 1939 or Earlier	31	0.85%	255	1.33%	4,117	8.96%
2009 Median Year Built	1989		1986		1972	